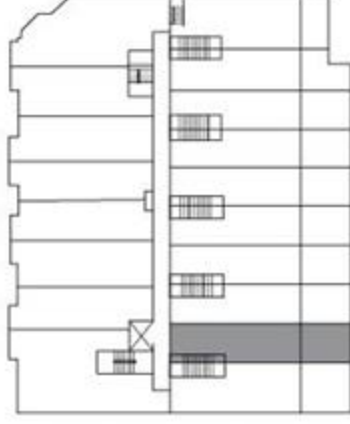
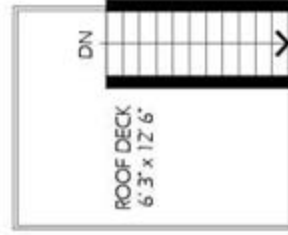
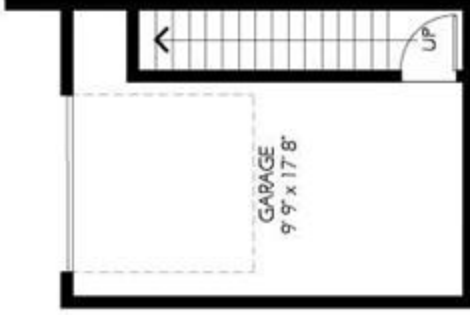
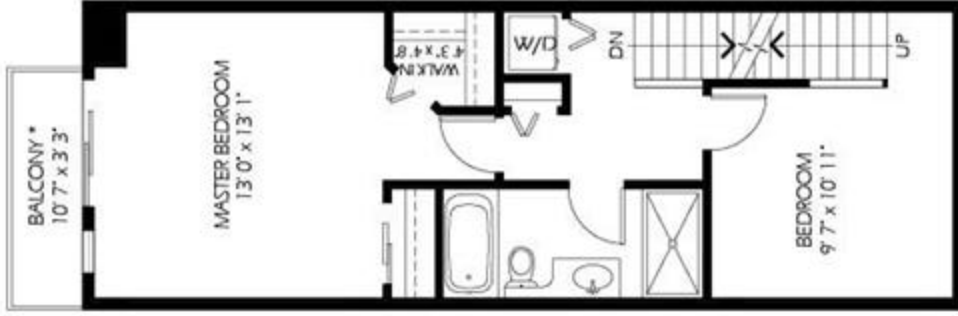
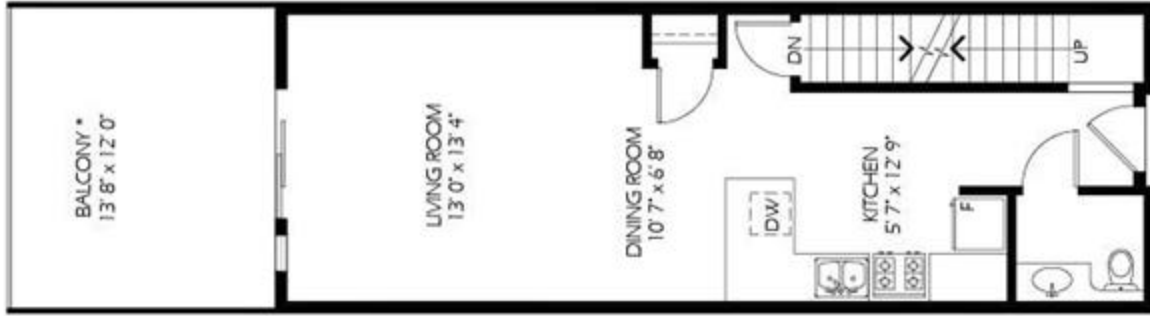


# ZOEY BUILDING

3423 East Hastings Street  
Vancouver V5K 2A5



ABOVE MAIN	538	SQ FT
MAIN FLOOR	536	SQ FT
BELOW MAIN	55	SQ FT
<b>TOTAL AREA</b>	<b>1,129</b>	<b>SQ FT</b>
BALCONY *	164	SQ FT
BALCONY *	34	SQ FT
PRIVATE GARAGE*	186	SQ FT
ROOF TOP DECK *	91	SQ FT