

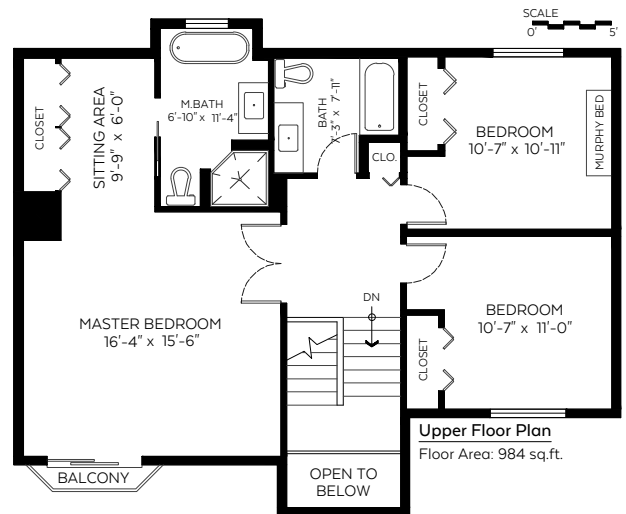
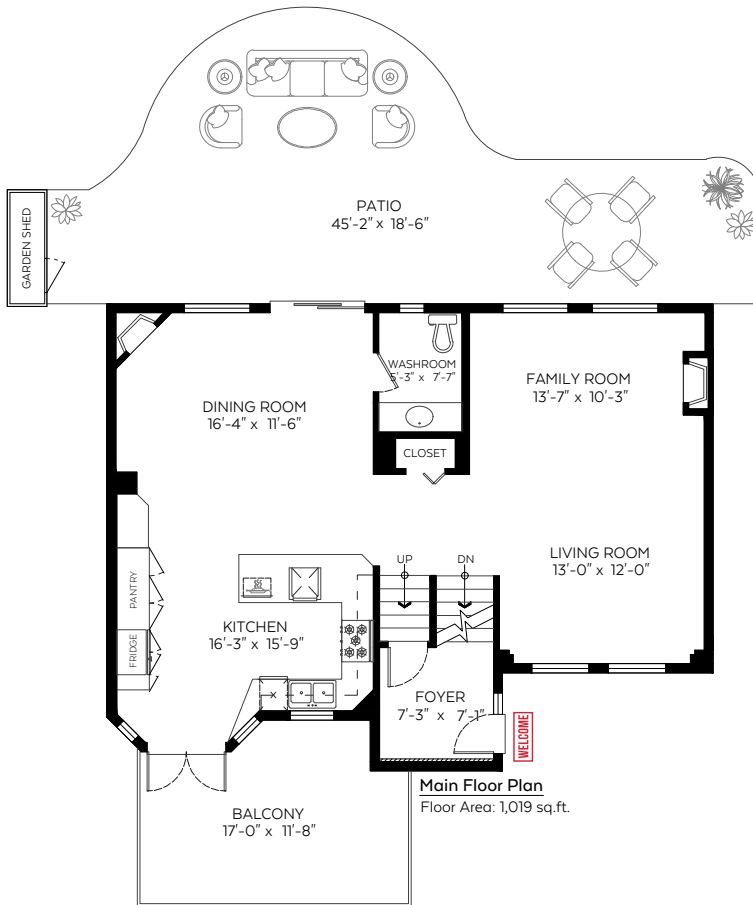


634 Thurston Terrace,  
Port Moody, B.C.

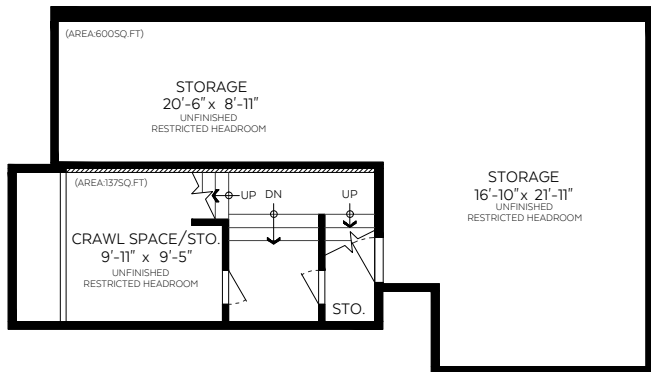
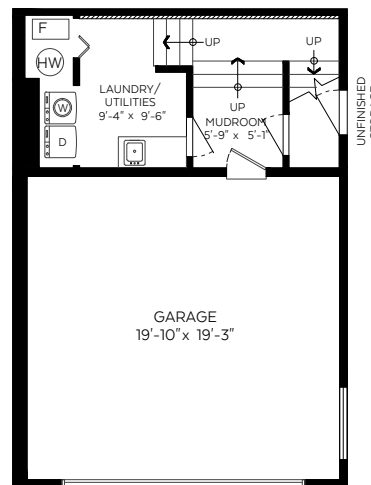
Main Floor:	1,019 sq.ft.
Upper Floor:	984 sq.ft.
Lower Floor:	225 sq.ft.
<b>Total:</b>	<b>2,228 sq.ft.</b>
Open To Below:	33 sq.ft.

**Auxiliary Area**

Restricted Storage:	737 sq.ft.
Garage:	419 sq.ft.
Patio:	565 sq.ft.
Garden Shed:	19 sq.ft.
Balcony:	177 sq.ft.



**Lower Floor Plan**  
Floor Area: 225 sq.ft.



Measured on: Sep. 11, 2019



The floor plan is not suitable for architectural/construction and is covered under E&O. © Excelsior Measuring Inc. 2019. All rights reserved for Excelsior Measuring Inc. Users shall not publish and distribute such material (in whole or in part) and/or incorporate it in other works in any form.



Booked on the Pixilink App™

