

1098 - 1100 MARSDEN COURT

BURNABY, BC

MAIN 2,909 SQ.FT.

UPPER 2,700 SQ.FT.

LOWER 2,907 SQ.FT.

TOTAL 8,516 SQ.FT.

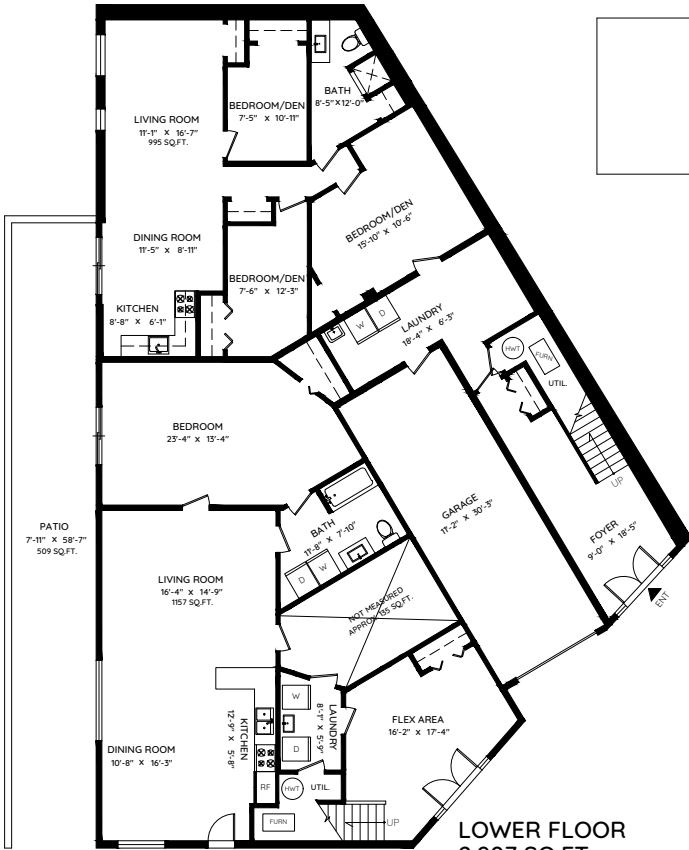
GARAGE 337 SQ.FT.

BALCONY 628 SQ.FT.

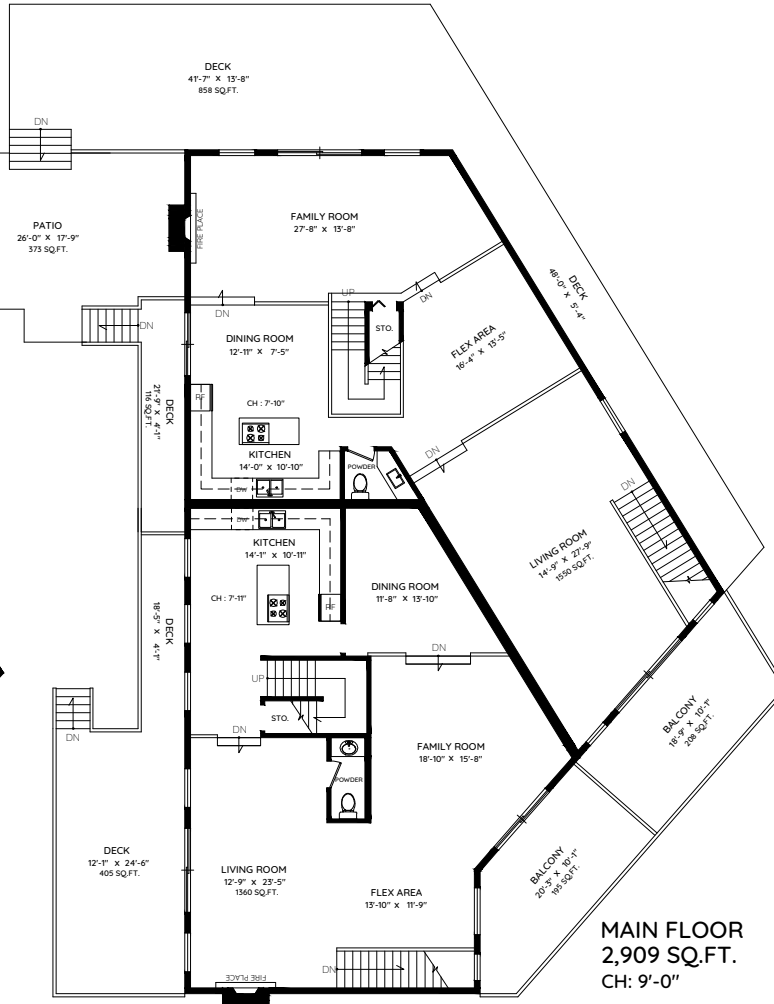
DECK 1379 SQ.FT.

PATIO 882 SQ.FT.

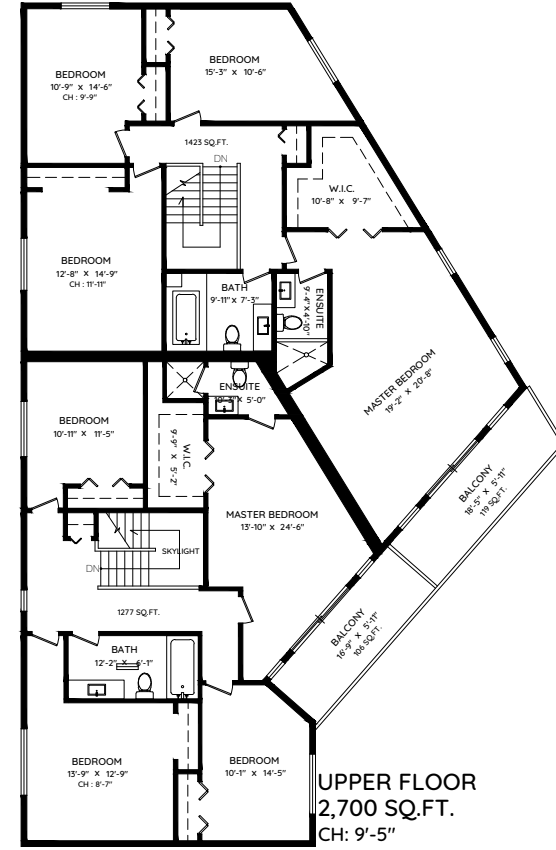
TOTAL 3,226 SQ.FT.



LOWER FLOOR
2,907 SQ.FT.
CH: 8'-0"



MAIN FLOOR
2,909 SQ.FT.
CH: 9'-0"



UPPER FLOOR
2,700 SQ.FT.
CH: 9'-5"



The floor plan and the measurements are approximate within +/- 2% and are to be used for advertising usage only. Not suitable for architectural or construction. May include unfinished area. Not suitable for architectural or construction. E&O Insured